

[Skip to main content \(#content\)](#)

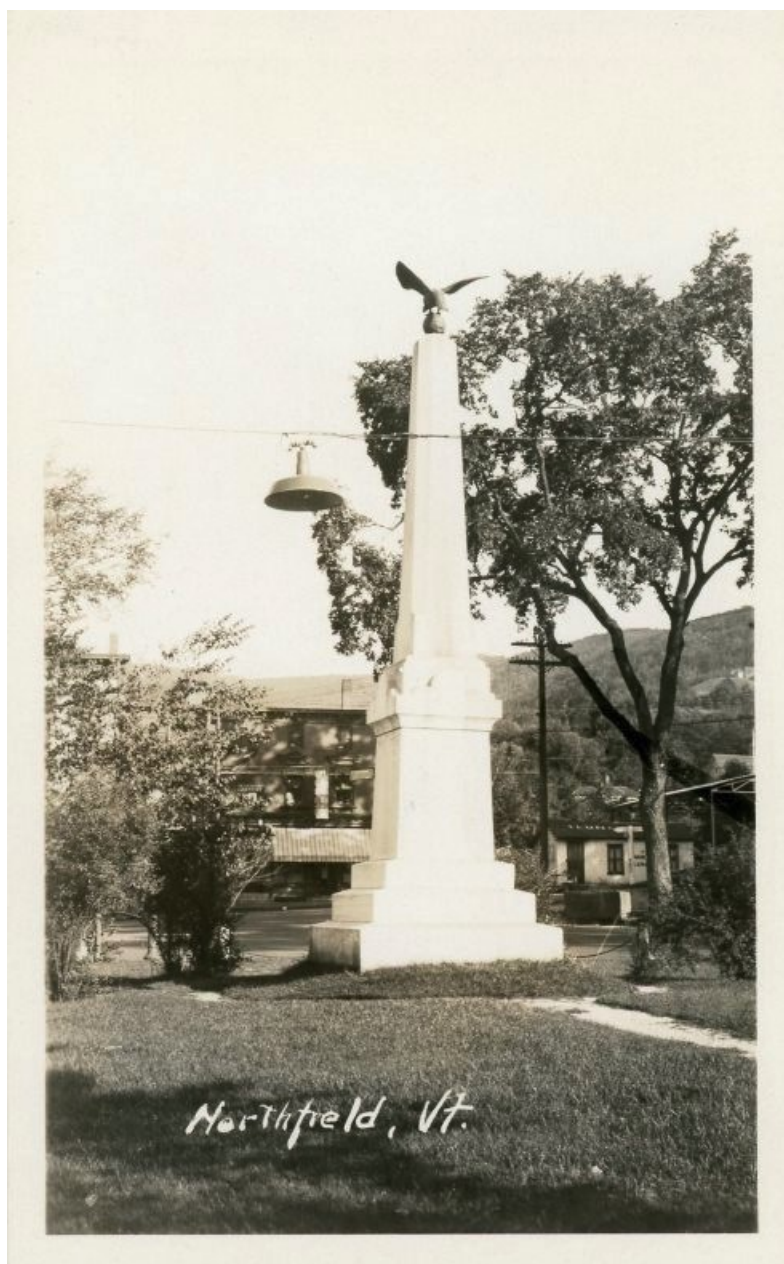


DIGITAL VERMONT

a project of the Vermont Historical Society

<http://www.digitalvermont.org>

Civil War Memorial



<http://www.digitalvermont.org/files/original/15/1113>

[/Nfld2006-023CivilWarMemorial.jpg](#)

Title

Civil War Memorial

Description

This photo was taken later than 1885, but surprisingly it is the only postcard in our collection that features just the Civil War monument. The town voted in 1885 to appropriate \$500 to build a monument to those Northfield men who fought in the Civil War. Being frugal Vermonters and wasting nothing, the base was formerly the Gov. Charles Paine monument, which was situated in front of the then-Congregational Church in town. When Paine's body was moved to Elmwood Cemetery, it was decided to use the granite base to form the foundation of this Civil War tribute. Names of those who served are etched around the entire granite base, and it was dedicated with great celebration and fanfare in 1886, and still stands today.

Date

After 1885

Subject

Northfield (Vt.)--Photographs
Northfield (Vt.)--History--Civil War, 1861-1865--Monuments
War memorials--Vermont--Northfield

Source

General Photograph Collection, 2006.23

Rights

This image is presented for research and educational purposes only. Permission to publish must be obtained from the repository listed below.

Identifier

Nfld2006-23CivilWarMemorial

Original Format

Black-and-white postcard

Repository

Northfield Historical Society, PO Box 422, Northfield, VT 05663

Collection

[Northfield Historical Society \(/collections/show/15\)](#)

Citation

"Civil War Memorial," *Digital Vermont: A Project of the Vermont Historical Society*, accessed October 12, 2018, <http://www.digitalvermont.org/items/show/1113>.

Proudly powered by [Omeka \(http://omeka.org\)](http://omeka.org).